

Educational Administration, Leadership, & Research UPDATE

Issue 3

October, 2008

Faculty

- Jeanne Fiene, Ph.D. -
Department Head*
- Fred Carter, Ed.D.*
- Gayle Ecton, Ed.D.*
- Buddy Hooper, Ed.D.*
- Ric Keaster, Ph.D.*
- Steve Miller, Ph.D.*
- Bud Schlinker, Ed.D.*
- Sharon Spall, Ph.D.*
- Jim Stone, Ph.D.*
- Chris Wagner, Ph.D.*
- Jianliang Wang, Ed.D.*

Staff

- Carolyn Hunt*
- Donna Cooper*

Inside this issue:

WKU Doctoral Program	1
Faculty News	2
Faculty Spotlight	3
Cooperative Doctoral Program News	4
Alumni News	5

First Ed.D. Students Admitted to WKU's Doctoral Program

The WKU Doctor of Education (Ed.D.) has as its philosophical foundation and primary purpose the development of scholarly practitioners, equipped to assume leadership roles in every phase of the educational process and to work with educational partners across agencies to improve student and employee performance.

The purpose for the program is to improve professional practice through the development of competencies in obtaining and synthesizing knowledge for problem solution and improvement of recurring practices. Students will be provided value-added opportunities to develop breadth in understanding leadership, policy issues, and research methods. The intended outcome is to produce future leaders who will creatively generate new knowledge, critically conserve valuable and useful ideas, and responsibly transform those understandings through writing, teaching, and application. Graduates of the program will be well positioned to contribute to the improvement of education at all levels and settings in the

Commonwealth of Kentucky. The Ed. D. Program currently offers four specialty areas:

◆ P-12 Administrative Leadership

The P – 12 Administrative Leader specialty area is primarily designed for public school and district administrators. Courses emphasize inquiry and analysis of problems confronting the administrator in education environments. In addition to focusing on practical issues, candidates' values will be clarified and tied to a leadership vision. The candidates will learn to seek clarity and focus when faced with ambiguity, to evaluate operations, and to design and implement improvements required to address the needs of all students.

◆ Teacher Leadership

The Teacher Leader specialty area is designed for teachers and individuals filling roles in areas including assessment, curriculum, technology, literacy, and grade or team coordination. Teacher leaders are essential to overcome student barriers to learning, especially those that emerge from high-need environments. Placing highly trained teachers who are prepared for systemic change

and leadership in schools will help close the achievement gap, facilitate learning for all students, and develop equitable practices to meet the needs of diverse learners.

◆ Postsecondary Education Leadership

The specialty area of Postsecondary Education Leader prepares individuals for work in postsecondary institutions. These will be leaders who bring ethical and reflective perspectives to leadership and professional practice in postsecondary education. They are committed and enabled to address the needs of society, postsecondary education, and the diverse populations they serve. Candidates will gain new skills and theoretical frameworks by examining practices in postsecondary education environments. Graduates may hold positions in academic affairs, student affairs, support services, and other key positions of postsecondary education leadership.

◆ Organizational Leadership

The Organizational Leader specialty area provides preparation for leaders in education-related organizations and non-profits

(Continued on Page 3)

Faculty News (Activities from 2007-08)



You do not lead by hitting people over the head -- that's assault, not leadership.

--Dwight D. Eisenhower, 34th U.S. president



Publications

- ◆ Hawkins, J. & Wagner, C. (2008). *School Culture assessment: Training for facilitators*. Kentucky School Leader. (Hawkins is a former Kentucky Distinguished Educator and Executive Director of the Kentucky Valley Educational Cooperative.)
- ◆ Keaster, R. & Schlinker, W. (2008). *What good are educational administration certification programs?* International Journal of Leadership in Education.
- ◆ Keaster, R. & O'Phelan, M. (2008). *Invisible influences in program development*. SRCEA Yearbook.
- ◆ Miller, S. K. (2008). *Educational quality and the accountability movement: Lessons from John Deere tractors and family farms*. Kentucky School Leadership. (Dr. Miller is a new EALR faculty member.)
- ◆ Schlinker, W., Kelley, W., O'Phelan, M., & Spall, S. (2008). *Support and resources for site-based decision-making councils: Perceptions of former council members of two large Kentucky school districts*. Florida Journal of Educational Administration & Policy.
- ◆ Wagner, C. (2008). *A different kind of cultural renaissance*. Kentucky School Leader.
- ◆ Wagner, C. & Biggerstaff, M. (2008). *The silent curriculum: Lesson plans for leaders*. Kentucky School Leader. (Biggerstaff is Principal of Tompkinsville Elementary School in Monroe County.)

Presentations

- ◆ Keaster, R., Schlinker, W., & Kelley, W. (2008). Evaluating the internship: The interns speak. A presentation of research results at the Kentucky Leadership Continuum Retreat, Lake Barkley, KY.
- ◆ Schlinker, W., Keaster, R., & Kelley, W. (2008). *1st-Year internship: Structured for success*. A paper presented at the annual meeting of the National Council of Professors of Educational Administration in San Diego, CA.
- ◆ Kelley, W., Keaster, R., & Schlinker, W. (2008). *The ISLLC Standards and the assessment of 1st-Year interns*. A paper presented at the annual meeting of the National Council of Professors of Educational Administration in San Diego, CA.
- ◆ Wagner, C., Garrison, A., Newman, H., Harmon, R., & Jenkins, J. (2008). *Moving from ruts to grooves - Promoting a healthy school culture: 5 essential questions for you and your staff*. A paper presented at the Annual Kentucky Association of School Administrators Convention in Louisville, KY. (Garrison is Principal of John Hardin High School in Hardin County; Newman is Assistant Principal at Burns Elementary School in Daviess County; Harmon is Principal of Adair County Elementary School; and Jenkins is an Assistant Principal at Olmstead Elementary/Middle School in Logan County).

Service to the Profession

- ◆ Dr. Gayle Ecton continues to represent the department and college on the Educational Leadership Development Collaborative and is a member of the KY SAELP (State Action for Educational Leadership Project) managing statewide initiatives on principal program redesign and teacher leadership.
- ◆ The Kentucky Association of School Administrators is sponsoring a number of interactive workshops entitled *Assessing and Improving Your School's Culture*. The workshops will feature author, researcher, and professor, Dr. Christopher Wagner and an assortment of school leaders who will share proven strategies for improving school culture. The first session will convene at the Galt House Hotel & Suites in Louisville on October 27, from 7:30 to 9:00 p.m. (reception) and October 28, from 9:00 a.m. to 4:00 p.m. The workshop will also be offered at four different locations across the state in February. There is no charge to KASA members for this workshop and EILA credit will be provided. Please contact www.kasa.org <<http://www.kasa.org>> for registration information.

[If you would like to team with faculty for research and/or other publication opportunities, feel free to contact them.]

WKU Doctoral Program

(continued from Page 1)

not classified as schools, colleges, or universities (e.g., local community agencies, human resource and development officers, or consultants and trainers). Candidates would qualify for a variety of roles within organizations: policy-makers in federal and private agencies, foundation administrators, and employees of state boards of education, Ministry of Education employees, nurse executives, or directors of professional development. The coursework and learning experiences in this track apply leadership with a strong emphasis on field experiences within these organizations. Members of the first cohort (all specialty areas) are as follows :

John Baker—WKU—Coordinator Leadership Studies
Glynn Bowles-Earle—Muhlenberg Co. Schools—Curriculum Specialist
Matthew Constant—Daviss Co.—Technology Coordinator
Stephanie Cornwell—Sumner Co. Schools—Spec. Ed. Teacher
Dan Costellow—Warren East H.S.—Agriculture/FFA
Wes Cottongim—Briarwood Elem.—Teacher
Cindy Ehresman—WKU—Coordinator/Leadership Studies
Terry Elliott—WKU—English Department
Eric Gregory—Save our Kids Coalition—Exec. Director
Angela Gunter—Daviss Co. H.S.—Teacher
Tracy Inman—WKU—Gifted Studies
Penny Logsdon—Elizabethtown Comm. College—Radiography Prog. Dir.
Jace Lux—WKU—Assist. Director Forensics
Lee Maglinger—WKU-Owensboro—Instructor (Part Time)
Sheri McGuffin—Nelson Co. H.S.—Math Instructor
Christopher Mueller—Hart Co. H.S.—Principal
Eugene Patsalides—Henderson Comm. College—Associate Professor
Marsha Reddick—Adair Co. Schools—Curriculum Specialist
Donna Renaud—WKU—Instructor/Dept. of Communications
Holly Ross—Russell Middle School—Take One Coordinator
Carol Schreiber—UK Co. Extension Agent—Horticulture
Kelly Davis-Scott—EKU—Coordinator/KY Center Instructional Discipline
Lee Ann Smith—WKU-Glasgow—Chemistry Instructor
Kevin Thomas—WKU—Academic Advising
Wesley Waddle—Hart Co.—Assistant Superintendent

(Continued on page 4)



People, even more than things, have to be restored, renewed, revived, reclaimed and redeemed; never throw out anyone.

--Audrey Hepburn, actress/philanthropist

WKU's First Doctoral Cohort



Faculty Spotlight — Three New Faculty Members

Dr. Fred Carter recently joined the EALR Department and serves as WKU Director of Teacher Services and School Relations. Dr. Carter previously served for many years as an administrator in the Warren County and Bowling Green Independent School Districts before accepting a position as superintendent of the Glasgow Independent School District. Following his retirement as superintendent in June of 2007, he served in state government as Deputy Secretary of the Education Cabinet. During his career in public education, Dr. Carter served as president of the Kentucky Association of Secondary School Principals and also served as president of the Kentucky Association of School Administrators. Twice named Kentucky Principal of the Year, he has been a

frequent presenter at state and national conferences with topics ranging from school health mandates to school climate and administrative leadership.

Dr. Buddy Hooper, who also recently joined us at WKU, served as a university professor at the University of Arkansas in Little Rock. Dr. Hooper's experiences include serving as a school superintendent in both Texas and Kansas. Additionally, he has chaired and/or served on several dissertation committees and looks forward to assisting students in our new doctoral program. His areas of expertise include the following: the school superintendency, the school principalship, leadership theory and leadership traits, school violence, learning communities, and online

learning. Dr. Hooper has influenced many teachers and administrators in the field, especially those aspiring to the school superintendent position.

Dr. Steve Miller comes to us from the University of Louisville and has been working for a number of years with our faculty and with students in the Cooperative Doctoral Program. His research interests include the following: school effectiveness and school improvement, change and organizational theory, school reform and accountability, and the inequalities of class- and race-based inequalities. Dr. Miller comes to us with several years of experience at a Research I institution but stays in close touch with his roots as a school principal through the research he does with doctoral students on their dissertations.



So long as I am acting from duty and conviction, I am indifferent to taunts and jeers; I think they will probably do me more good than harm.

--Winston Churchill

WKU Doctoral Program *(continued from Page 3)*

The Ed.D. is a cohort program where students go through the requirements for completion in a group together, averaging six credit hours per semester. The program is designed to take approximately three years to complete, including the dissertation. The first cohort was admitted this past summer and the next cohort will be screened and admitted

this fall for a January start time for their programs. If you are interested in applying for the program, please contact Emily in the Doctoral Program Office at 270-745-3061 or emily.dillard@wku.edu, or you can visit the program Web site at <http://edtech.wku.edu/programs/doctorate>. Questions should be directed to Dr. Jeanne Fiene, Director (270-745-2942).

Alumni Survey

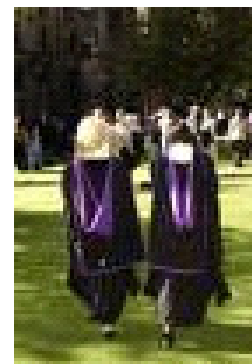
We are conducting a survey of all our alumni. If you will, please go to the Web address below, click on the link for the survey, complete it, and hit "Done." Your feedback will help us both document our success in preparing administrators and point us toward efforts that will help us improve. Thank you!! <http://edtech.wku.edu/~edleader/>

Cooperative Doctoral Program Graduates

The University of Louisville and WKU Cooperative Doctoral Program proudly added three new graduates to the list since the publication of our last newsletter. The program has now graduated 50 students over the course of the

past 15 years of delivering the program. The graduates this past spring were **Dana Cosby-Simmons**, **Rebecca Painter**, and **Alejandro Saravia**. The faculty in EALR and the administration in CEBS would like to congratulate these

individuals on this significant accomplishment. Students still enrolled in the program have been notified that, due to the initiation of the Ed.D., there have been deadlines set for completing their degrees in the Cooperative Doctoral Program.



Alumni News - Administrative Appointments

Allen Co.

Brian Carter, Principal
Adair Co./Scottsville H.S.

Bowling Green Ind.

Angela Lawler, Director
Eleventh St. Alt. School

Breckenridge Co.

Janet Meeks, Superintendent

Butler Co.

Scott Howard, Superintendent
Jeff Jennings, Principal
Butler Co. Middle School

Caldwell Co.

Bruce McCalister, DPP

Campbellsville Co.

Mike Deaton, Principal
Campbellsville H.S.

Christian Co.

Demetria Choice, Principal
Hopkinsville H.S.

Cloverport Co.

John Millay, Superintendent

Crittenden Co.

Rachel Yarbrough, Superintendent

Daviess Co.

Matthew Constant, Director
Instructional Technology
Dane Ferguson, Principal
Burns Middle School
Chad Alward, Asst. Principal,
Deerpark Elementary School
Anthony Sparks, Principal
Daviess Co. H.S.

Edmonson Co.

Kyle Cassidy, Principal
Edmonson Co. Middle School

Glasgow Co.

Kathy Goff, Superintendent

Grayson Co.

Doug Robinson, Principal
Grayson Co. H.S.
Dan Imes, Asst. Principal
East Carter H.S.

Hardin Co.

Jim Sullivan, Principal
Meadow View Elementary School
Steve Smallwood, Principal
Elizabethtown H.S.

Hart Co.

Allen Poynter, Principal
Memorial Elementary School

Jefferson Co.

Delena Alexander, Principal,
Stuart Middle School

Lincoln Co.

Larry Woods, Superintendent

Logan Co.

John Myers, Principal
Russellville H.S.
Casey Jaynes, Principal
Logan Co. H.S.

McLean Co.

Tres Settle, Superintendent
Jodie Brackett, Principal
McLean Co. Middle School

Metcalf Co.

Jamie Moss, Director
Special Services
Angela Welsh, Principal
North Metcalfe Elementary School

Monroe Co.

Kurt Biggerstaff, Principal
Tompkinsville Elementary School

Murray Ind.

Tom Rendek, DPP and Director
Transportation/Operations

Powell Co.

Evelyn Neely, Superintendent

Russellville Ind.

Tammy Corum, Principal
Stevenson Elementary School

Simpson Co.

Shelina Smith, Principal
Franklin-Simpson Middle School

Taylor Co.

Brian Clifford, Principal
Taylor Co. Elementary School

Union Co.

Josh Powell, Superintendent

Walton Co.

Rob Hartman, Principal
Walton-Verona Elementary School

Warren Co.

Melissa Stephanski, Principal
Plano Elementary School
Monte Cassady, Principal
Rockfield Elementary School
Lisa Hood, Principal
Warren Central H.S.
Nicole Clark, Dean of Students,
Warren East H.S.
Jason Kupchella, Asst. Principal,
Briarwood Elementary School

Woodford Co.

Scott Hawkins, Superintendent

KDE

Linda Handley, Highly Skilled
Educator

As always, we are extremely proud of our graduates who assume leadership roles and influence student learning in educational organizations.

Western Kentucky University

Department of Educational
Administration, Leadership, and
Research

Western Kentucky University
Tate Page Hall 425
1906 College Heights Blvd. #41031
Bowling Green, KY 42101-1031

Phone: 270-745-4890
Fax: 270-745-5445
Email: jeanne.fiene@wku.edu



Department of Educational Administration, Leadership, & Research

Attention: If you know of others who did not receive this newsletter and who would like to be added to our mailing list, please send us an email indicating such (jeanne.fiene@wku.edu). Please be sure to include email addresses for all who would like to be included in our next mailing. We hope you have enjoyed the information in this newsletter. Thank you for your continued support of the Department of Educational Administration, Leadership, and Research.